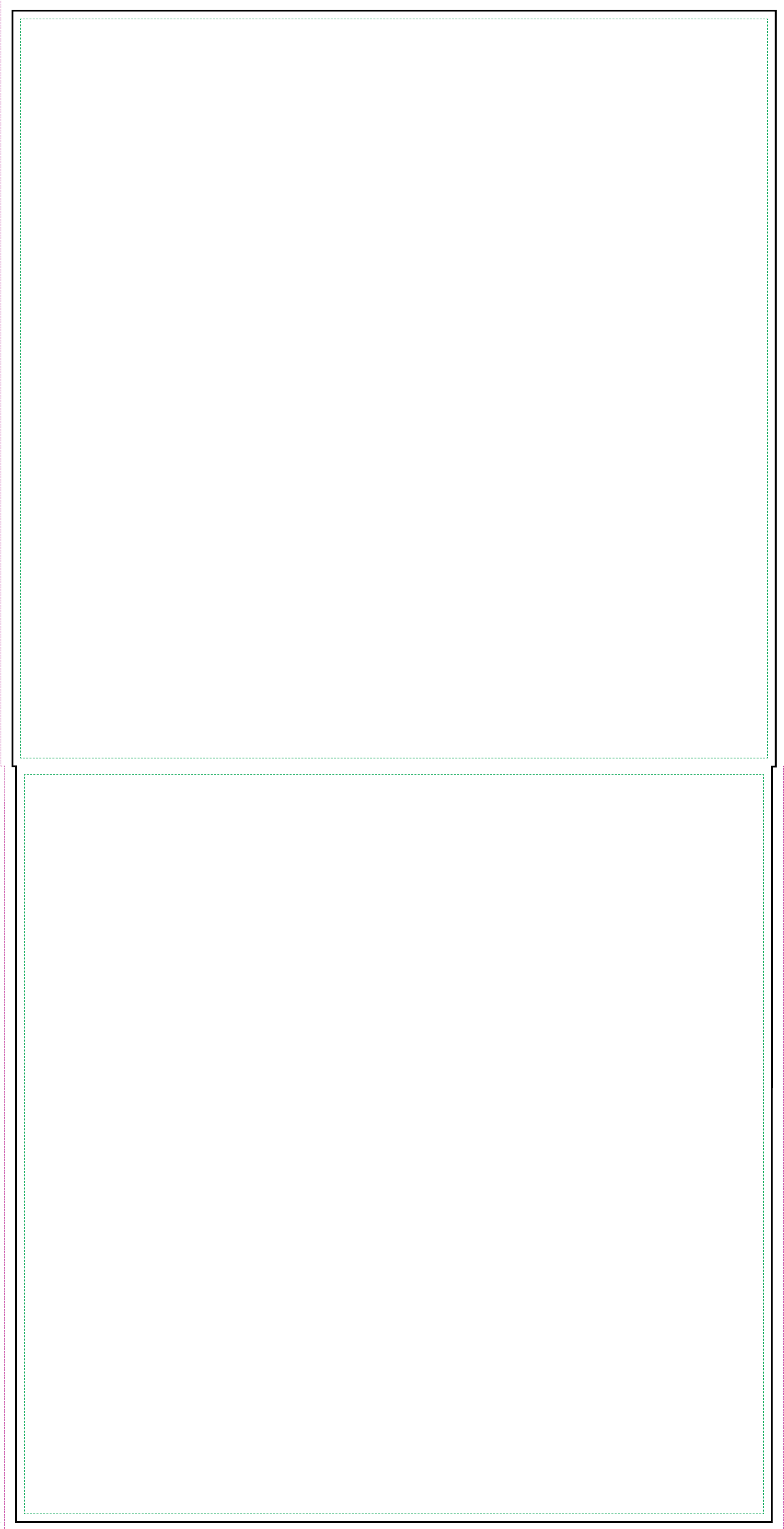


# 12" Innersleeve



**SAFE AREA**  
**DIELINE**  
**BLEED EDGE**

**NOTE:** Please start your artwork on a separate layer above or below this one. The template layer should remain locked.

Create a separate layer for your type. This enables you to create a copy that can be rasterized (if you are in Photoshop) or converted to an outline (if you are in Illustrator) so that all fonts in your project will remain intact.