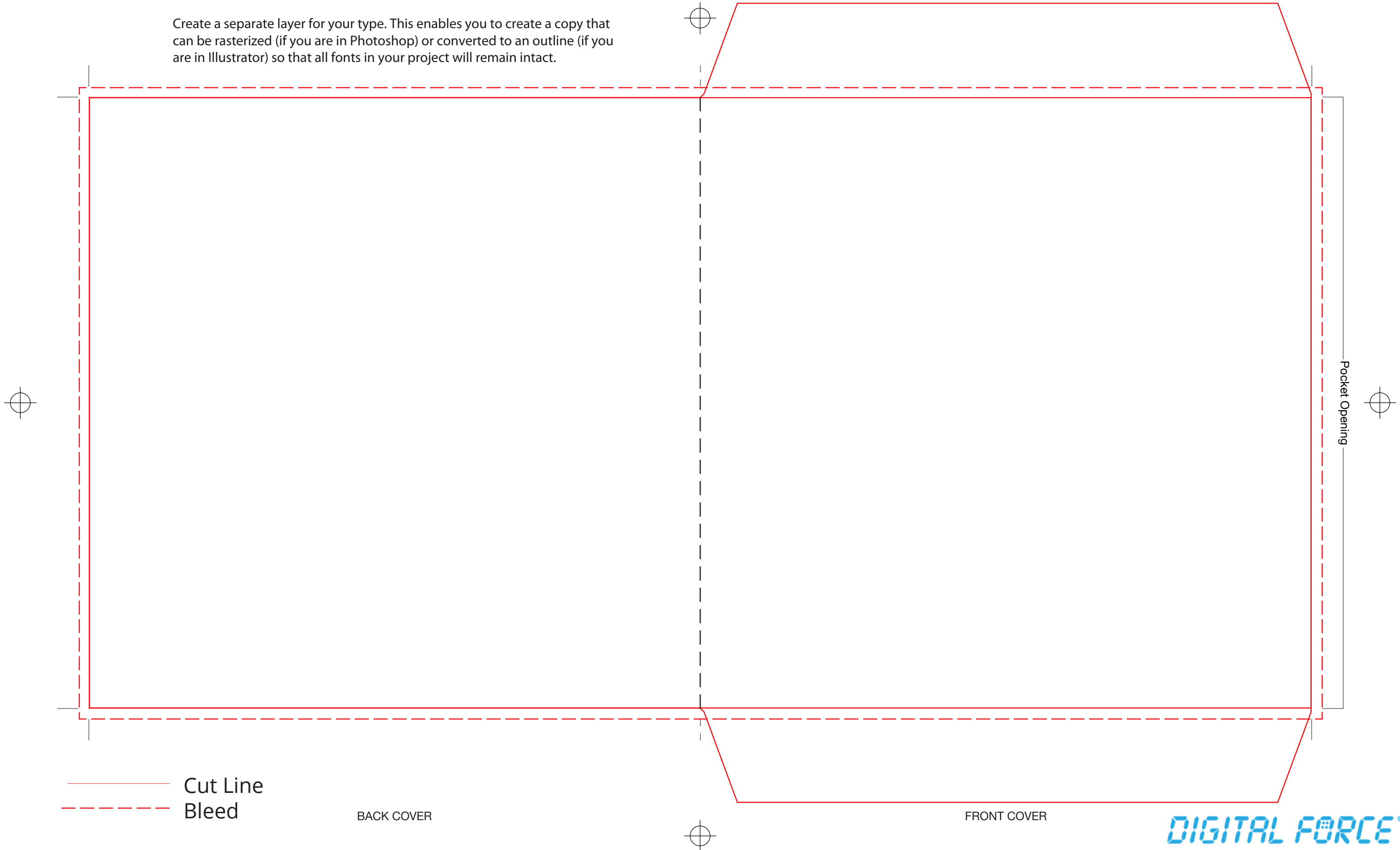


7" Record Jacket

NOTE: Please start your artwork on a separate layer above or below this one. The template layer should remain locked.

Create a separate layer for your type. This enables you to create a copy that can be rasterized (if you are in Photoshop) or converted to an outline (if you are in Illustrator) so that all fonts in your project will remain intact.



— Cut Line
- - - Bleed

BACK COVER

FRONT COVER

Pocket Opening

DIGITAL FORCE

digitalforce.com | 212.252.9300 | frontdesk@digitalforce.com